

KVP® Radius 1-1/5" Pitch Belting PR612 1.6

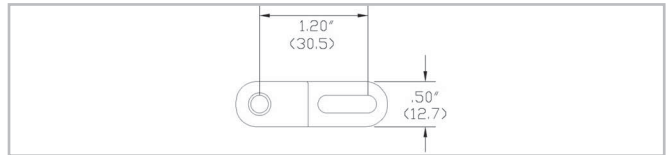
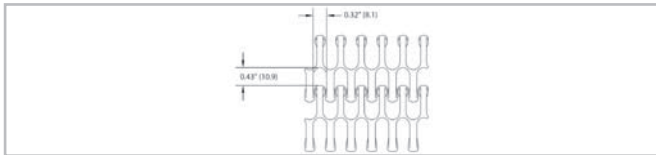
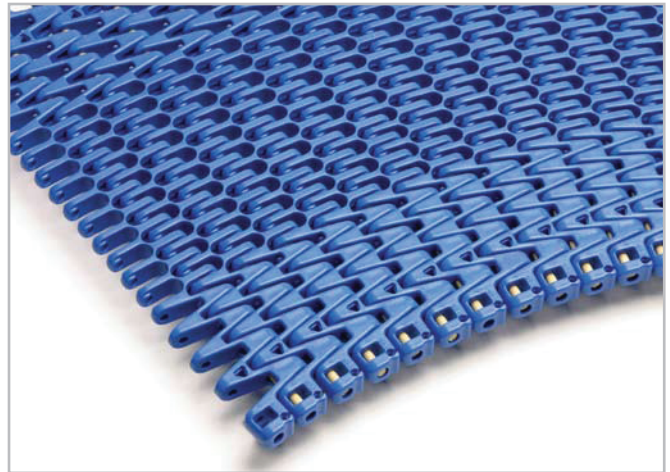


Your Source For Habasit
Belting And Chain

www.StilesEnterprises.com • 1-800-325-4232

Description

- 1-1/5 inch pitch
- Belt turning radius equals 1.3 times the nominal belt width up to 12 inches (304.8 mm)
- Belt turning radius equals 1.4 times the nominal belt width up to 20 inches (508 mm)
- Belt turning radius equals 1.6 times the nominal belt width over 20 inches (508 mm)
- 63% open area
- Food approved materials
- Connecting rod diameter = 0.188 inch (4.8 mm)
- Standard belt width increments = 1 inch (25.4 mm) nominal, starting from 12 inches (304.8 mm)
- Belt is available with and without tabs
- Material selection may affect belt width — please contact your local partner for actual dimensions



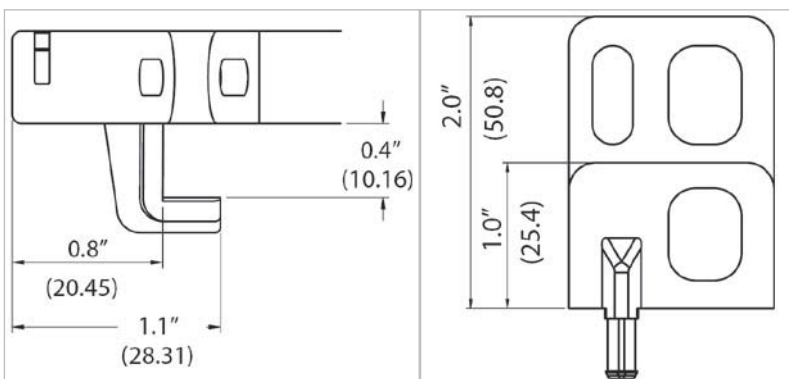
Belt data

Belt material		POM	
Rod material		PA	
Nominal tensile strength F_N in curve ⁽¹⁾	N lbf	890 200	1112 250
Temperature range	°C °F	-40 - 93 -40 - 200	-40 - 93 -40 - 200
Belt weight m_B	kg/m ² lb/sqft	7.4 1.51	7.4 1.51
Standard belt color		blue/gray	blue/gray

Note: The nominal tensile strength 890 N (200 lbf) refers to a belt with up to 24"; 1112 N (250 lbf) for belt width wider than 24".

Additional belt colors and materials available, abrasive resistant Nylon (Polyamide) and stainless steel rods available - contact your local partner.

Belt accessories



Hold down tabs

Sideplates
Available in 1", 2" and 4" heights.